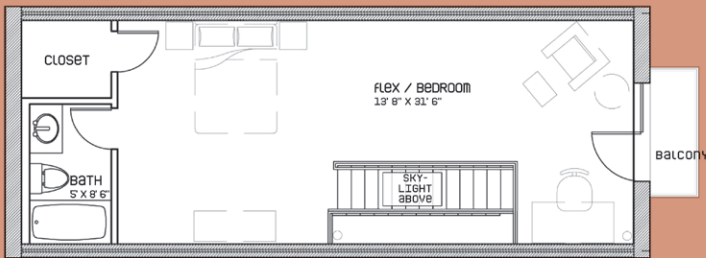
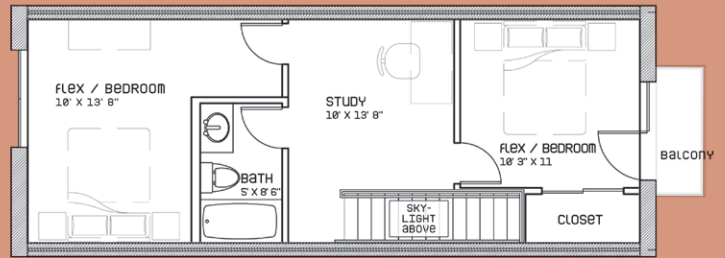


1305 LOFTS

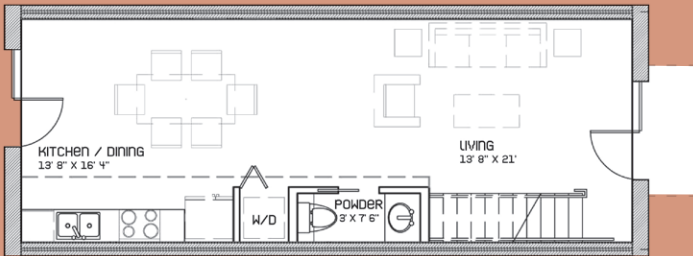
THE 1305 LOFTS PROVIDES A MUCH-IN-DEMAND COMMODITY WITH ITS 14 RESIDENTIAL UNITS TO THE URBAN EAST SIDE. 1305 LOFTS WILL BE THE FIRST WAREHOUSE CONVERSION TO RESIDENTIAL IN THE EAST END OF DOWNTOWN IN THE SALTILLO RAIL DISTRICT. THE UNITS WILL FEEL INCREDIBLY SPACIOUS WITH ITS 10 FOOT CEILINGS FIRST FLOOR AND 16 FOOT CEILINGS ON THE SECOND.



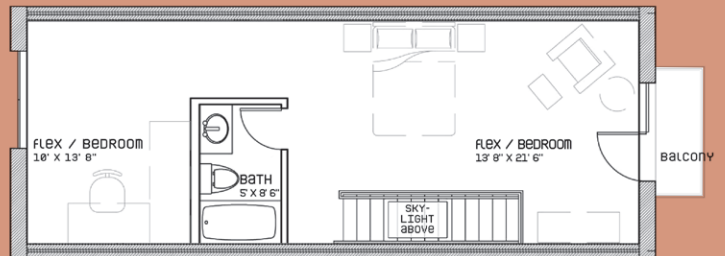
SECOND FLOOR PLAN
TYPICAL FOR UNITS #7 AND #8



SECOND FLOOR PLAN
OPTIONAL WALLS INCLUDED UNITS #1-6 & UNIT 9



FIRST FLOOR PLAN
TYPICAL FOR UNITS #1-9



SECOND FLOOR PLAN
TYPICAL FOR UNITS #1-6 & UNIT 9

1305 LOFTS WILL FEATURE EXPANSIVE WINDOWS AND SKYLIGHTS WHICH BRINGS IN NATURAL LIGHT, AND UPSCALE FINISH OUT INCLUDING SILESTONE COUNTERTOPS, ANTIQUE WOOD FLOORS, STAINED CONCRETE FLOORS, STAINLESS STEEL APPLIANCES, EXPOSED CMU WALLS, WOOD TRUSSES, AND AC DUCTS. THE COMPLEX HAS A SECURED PARKING LOT AND COVERED PARKING. MOST UNITS HAVE OVER 100 SQ FT OF PRIVATE PATIO SPACE.

FOR MORE INFORMATION PLEASE CONTACT US AT | WWW.1305LOFTS.COM

